

Femmina DIN a saldare "SOTTILE"

Normativa: DIN 11851 (DIN 1)

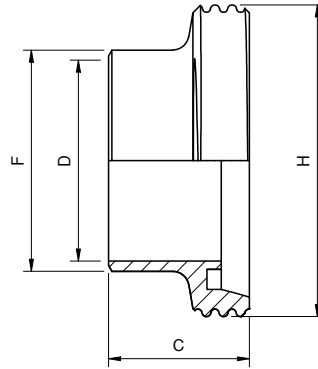


Fig. XD300.21

Codice	DN	Ø H (mm)	Ø F (mm)	Ø D (mm)	C (mm)
XD300.21010.***	10	28	12	9	21
XD300.21015.***	15	34	18	15	21
XD300.21020.***	20	44	22	19	24
XD300.21025.***	25	52	28	25	29
XD300.21032.***	32	58	34	31	32
XD300.21040.***	40	65	40	37	33
XD300.21050.***	50	78	52	49	35
XD300.21065.***	65	95	70	66	40
XD300.21080.***	80	110	85	81	45
XD300.21100.***	100	130	104	100	54
XD300.21101.***	100	130	101.6	97.6	54
XD300.21125.***	125	160	129	125	46
XD300.21150.***	150	190	154	150	50

disponibile solo inox AISI 316

Materiale	Sigla (***)
Inox AISI 304	304
Inox AISI 316	316