

Femmina ridotta a saldare DIN 11851 "SOTTILE"

Normativa: DIN 11851

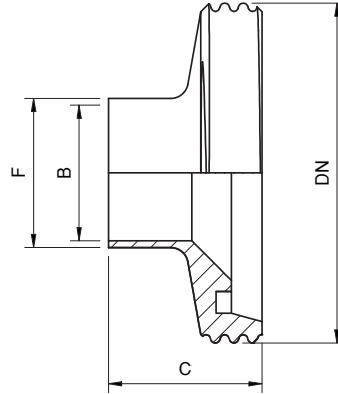


Fig. XD305.21

Codice	DN	Ø F (mm)	Ø B (mm)	C (mm)
XD305.21025020.***	25	22	19	-
XD305.21032025.***	32	28	25	32
XD305.21040025.***	40	28	25	33
XD305.21040032.***	40	34	31	33
XD305.21050032.***	50	34	31	35
XD305.21050040.***	50	40	37	35
XD305.21065040.***	65	40	37	40
XD305.21065050.***	65	52	49	40
XD305.21080065.***	80	70	66	45
XD305.21100080.***	100	85	81	54

Materiale	Sigla (***)
Inox AISI 304	304
Inox AISI 316	316