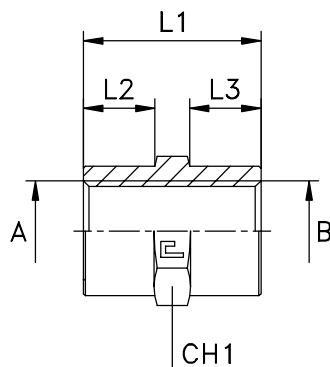


## Adattatore diritto femmina: Tipo 3112--

### SPECIFICHE TECNICHE

Acciaio Inox	Tipo 31****
Norme	BS-5200
Filetto	Gas cilindrico



Codice	A	B	L1	L2	L3	CH1
311201	1/8	1/8	20	7	7	14
311202	1/4	1/4	30	12	12	19
311203	3/8	3/8	30	12	12	24
311204	1/2	1/2	38	15	15	27
311205	3/4	3/4	40	15	15	36
311206	1	1	48	19	19	41
311207	1¼	1¼	50	19	19	55
311208	1½	1½	50	18	18	60
311209	1/8	1/4	25	7	12	19
311210	1/8	3/8	25	7	12	24
311211	1/4	3/8	30	12	12	24
311212	1/4	1/2	35	12	15	27
311213	1/4	3/4	37	12	15	36
311214	3/8	1/2	35	12	15	27
311215	1/2	3/4	40	15	15	36