

Maschio ridotto a saldare DIN 11851 "SOTTILE"

Normativa: DIN 11851

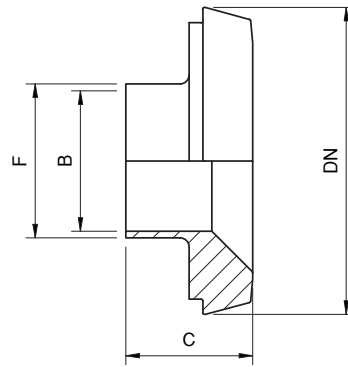


Fig. XD31521

Codice	DN	Ø F (mm)	Ø B (mm)	C (mm)
XD315.21025020.***	25	22	19	-
XD315.21032025.***	32	28	25	25
XD315.21040025.***	40	28	25	26
XD315.21040032.***	40	34	31	26
XD315.21050032.***	50	34	31	28
XD315.21050040.***	50	40	37	28
XD315.21065040.***	65	40	37	32
XD315.21065050.***	65	52	49	32
XD315.21080065.***	80	70	66	37
XD315.21100080.***	100	85	81	44

Materiale	Sigla (***)
Inox AISI 304	304
Inox AISI 316	316