

## Portagomma CLAMP AISI 316

Normativa: CLAMP BS

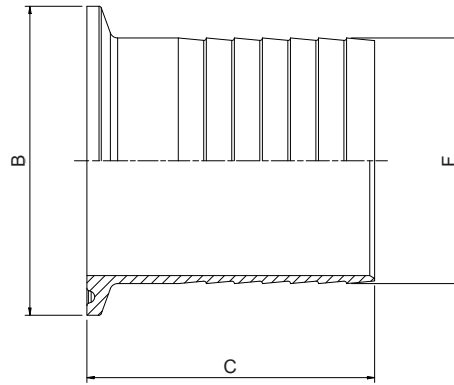


Fig. XC450.11

Codice	DN (inch)	B (mm)	F (mm)	C (mm)
XC450.11015.316	1/2"	25.4	12.7	38
XC450.11020.316	3/4"	25.4	19.0	38
XC450.11025.316	1"	50.4	25.4	43
XC450.11040.316	1 1/2"	50.4	38.1	43
XC450.11050.316	2"	64	50.8	59.5
XC450.11065.316	2 1/2"	77.4	63.5	60
XC450.11080.316	3"	90.9	76.2	79
XC450.11100.316	4"	118.8	101.6	86