

Tee a saldare AISI 316

Normativa: CLAMP BS

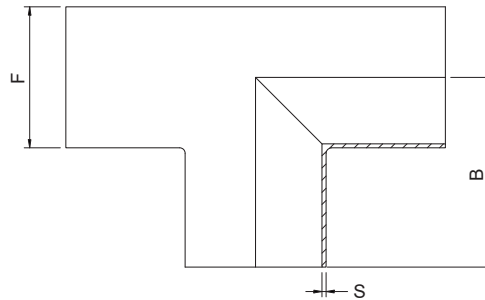
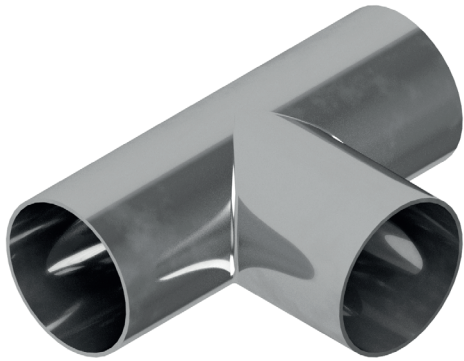


Fig. XC470.11

Codice	DN (inch)	F (mm)	L (mm)	B (mm)	S (mm)
XC470.11015.316	1/2"	12.7	38.1	19.05	1.65
XC470.11020.316	3/4"	19.05	95.2	47.6	1.65
XC470.11025.316	1"	25.4	108	54	1.65
XC470.11040.316	1" 1/2	38.1	120.6	60.3	1.65
XC470.11050.316	2"	50.8	146	73	1.65
XC470.11065.316	2" 1/2	63.5	158.8	79.4	1.65
XC470.11080.316	3"	76.2	171.4	85.7	1.65
XC470.11100.316	4"	101.6	209.6	104.8	2.10