

Tronchetto lungo spessorato CLAMP AISI 316

Normativa: CLAMP BS

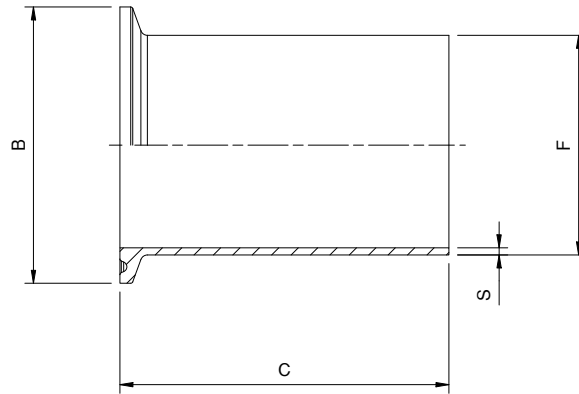


Fig. XC304.11

Codice	DN (inch)	B (mm)	F (mm)	C (mm)	S (mm)
XC304.11025.316	1"	50.4	29.46	63.5	3.68
XC304.11040.316	1" 1/2	50.4	42.57	63.5	3.88
XC304.11050.316	2"	64.0	55.68	63.8	4.09
XC304.11065.316	2" 1/2	77.4	68.78	88.8	4.29
XC304.11080.316	3"	91.0	81.89	114.3	4.49
XC304.11100.316	4"	119.0	108.1	114.3	5.36
XC304.11150.316	6"	166.8	165.1	158.75	9.12