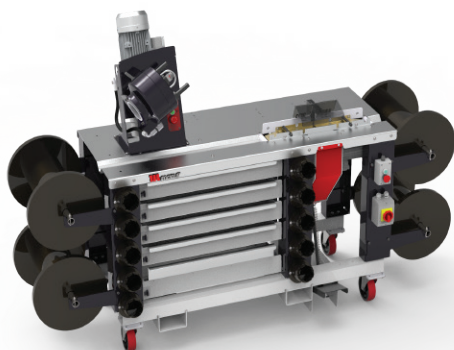


MOBILE WORKSHOP

ON-SITE REPAIR
2-IN-1 MOBILE SOLUTION

Version for hoses 2" Max.

KEY FEATURES

- Mobile solution
- 2-in-1 cutting and crimping
- Rotative head
- Integrated cutting machine
- Scalloped blade for efficient cuts
- Built-in pedal and dust collector
- Storage for hoses, fittings and dies

TECHNICAL SPECIFICATIONS

	VERSION 1"1/4	VERSION 2"
CAPACITY*	4 ws: 1"1/4 max.	4 ws: 2"max.
CRIMP FORCE	137 t	240 t
COMPLETE OPENING	108 mm (4.252")	118 mm (4.646")
OPENING WITH DIES	+28 mm (+1.102 ")	+38 mm (1.496")
MASTER DIE LENGTH	75 mm (2.953")	100 mm (3.937")
MOTOR	2.2 kW (crimping machine) 3 kW (stand type cutting machine)	
VOLTAGES	220/240 V-1 Ph-50 Hz 220/240 V-1 Ph-60 Hz 380/415 V-3 Ph + N-50 Hz	
MACHINE DIMENSIONS	2520 x 900 x 1670 mm (99 x 35 x 66")	2487 x 810 x 1370 mm (98 x 32 x 54")
MACHINE WEIGHT	382 kg (842 lb)	433 kg (955 lb)
STANDARD DIES	14, 16, 18, 20, 22, 24, 27, 30, 33, 36, 39, 42, 45, 48, 51	14, 16, 18, 20, 22, 24, 27, 30, 33, 36, 39, 42, 45, 48, 51, 57, 63, 66, 70

*Indicative capacities depending on hose and fitting type

OPTIONAL

Aluminium Quick
Change Gun